

Årsrapport

2021

Forskning på Sygehus Sønderjylland




Region Syddanmark

Sygehus
Sønderjylland

Indhold

Beretning	3
Forskningsenhed i Neurologi	5
Molekylærdiagnostisk og Klinisk Forskningsenhed (MOK)	6
Forskningsenhed for Akutmedicin	7
Medicinsk Forskningsenhed	8
Forskningsenheden i Bedøvelse og Intensiv	10
Forskningsenhed i Kvindesygdomme og Fødsler	11
Kirurgisk forskningsenhed	12
Ortopædkirurgisk Forskningsenhed	13
Forskningsenhed i Patologi	13
Artikler fra øvrige afdelinger	14

DATABLAD
Årsrapport 2021
Forskning på Sygehus Sønderjylland

Udgiver
Forskningsudvalget
Sygehus Sønderjylland
Institut for Regional Sundhedsforsk-
ning, Syddansk Universitet
Kresten Philipsensvej 15
6200 Aabenraa

Layout: Kommunikation,
Sygehus Sønderjylland

Beretning

Forskning på Sygehus Sønderjylland er fortsat i fuld udvikling. Selvom året 2021 også har været præget af Covid-19, har vi i løbet af året kunnet byde velkommen til ny forskningsleder på ortopædkirurgisk afdeling, overlæge og professor Lars Henrik Frick og ny forskningsleder på patologisk afdeling, professor og overlæge Niels Marcussen samt ny lektor på apoteket, farmaceut Lene Juhl Kjeldsen. Kardiologisk afdeling har igangsat to phd. studerende og dermed har langt de fleste kliniske og kliniske serviceafdelinger nu medarbejdere som er forskningsaktive.

Efter i mange år at have leveret en solid forskningsindsats som lektor på mikrobiologisk afdeling vil overlæge Ming Chen fremover hellige sig det kliniske arbejde igen.

Sygehus Sønderjylland har udarbejdet en ny forskningsstrategi for 2020-2024. I 2021 var det indsatsen "forskerstøtte i alle faser" som blev gennemført og som i 2022 vil udmønte sig i en selvstændig "Klinisk Forskningsafdeling", der som en stabsfunktion vil understøtte forskningen fra ideen opstår til publikationen er offentliggjort.

Sygehuset arbejder hen imod at leve op til det regionale krav om at 2% af driftsbudgettet anvendes til forsk-

ning i 2023, og at 2/3 af alle forskningsmidler kommer fra eksterne kilder. For at nå dette mål, er der udarbejdet budgetter for forskning for de næste 5 år, og der ansættes i 2022 en fundraiser.

I forskningsstrategien sættes som mål at øge den videnskabelige artikelproduktion med 5% pr år i forhold til 2018, hvor der udgik 68 artikler fra Sygehuset. I 2020 udgav vi 92 artikler, en stigning på 35 % over de to sidste år, mens der i 2021, til trods for at mange forskere måtte bruge megen tid på COVID arbejde, alligevel næsten kunne fastholde niveauet med 83 publicerede artikler.

Visionen for 2022 er, at Sygehus Sønderjylland understøtter de særligt prioriterede strategiske forskningsområder: Folkesygdomme, psykisk sygdom og sårbarhed, personlige medicin, det præ-hospitale område og effektivitet i forskning. Sygehus Sønderjyllands styrke er, at der er en nær kontakt til en bred befolkningsgruppe med "almindelige" sygdomme og at vi kan arbejde på tværs af specialer og sygehusenheder om disse patienter.

I 2021 har 4 phd. studerende afsluttet deres forløb med velbesøgte phd-forsvar. Det er vi stolte af, da det viser, at vi er et sygehus, der prioriterer forskning og hvor forskere, nye som gamle, har lyst til at være. Vi forventer at mere end 50 personer vil være hel- eller delvis beskæftiget med forskning i 2022.



Peter Sørensen,
Lægefaglig direktør



Christian Backer Mogensen,
Koordinerende Forskningsleder

I løbet af 2021 kom antallet af forskningsenhederne på Sygehus Sønderjylland op på ni enheder fordelt både i Sønderborg og Aabenraa. Alle forskningsenhederne er forankret ved Syddansk Universitet og hører under Institut for Regional Sundhedsforskning (IRS). IRS udgør den universitære partner og den organisatoriske ramme for klinisk forskning og uddannelse. Sygehus Sønderjylland har et tæt samarbejde med de 11 andre sygehuse, som hører under IRS i Region Syddanmark og Region Sjælland.

Instituttets drift består i at understøtte hovedopgaver på sygehuset for både den enkelte ansatte forsker, forskningsenhederne, forskningsledelserne samt fakultetet og universitet som den overordnede organisation.

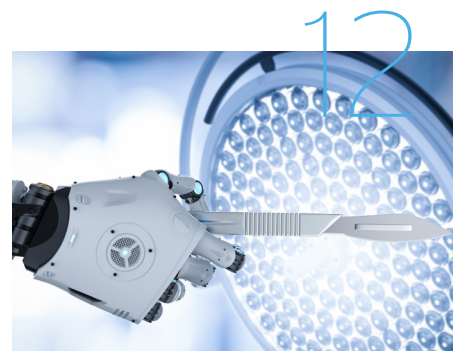
Forskningen gennemføres med blik på Sygehus Sønderjyllands overordnede strategi, herunder blandt andet sammenhængende og sikre patientforløb. SHS forskningsstrategi_2020_2024.



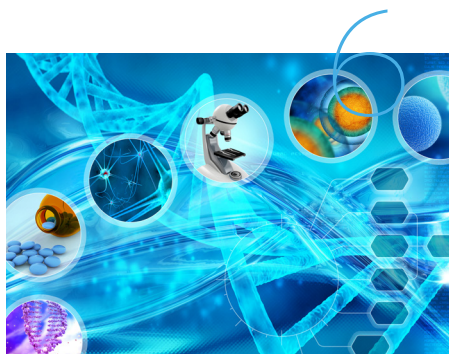
Forskningsenhed i Neurologi



Medicinsk Forskningsenhed



Kirurgisk forskningsenhed



Molekylær Diagnostik og
Klinisk Forskningsenhed (MOK)



Forskningsenhed i
Bedøvelse og Intensiv



Ortopædkirurgisk Forskningsenhed
(OFS)



Forskningsenhed i Akutmedicin



Forskningsenhed i
Kvindesygdomme og Fødsler



Forskningsenhed i Patologi

Forskningsenheden er forankret i Afdelingen for Hjerne- og Nervesygdomme. Afdelingen foretager udredning af patienter med symptomer fra det centrale og perifere nervesystem. Enhedens mål er vedvarende at udvikle neurologiske forskningsprojekter i tæt relation til den daglige kliniske praksis. Vi forsker i Multiple Sklerose, Mb. Parkinson, Apopleksi, Translationel forskning, Generel neurologi og Funktionelle lidelser. Enheden består af forskningsleder og professor Thor Pedersen, Post doc Sepehr Mamoei, Ph.d.-stud Trine Nielsen.

Sepeher Mamoei forsvarede sin ph.d. afhandling: Central and Peripheral Nervous System Changes as Markers of Disease Progression in Multiple Sclerosis i januar 2021.

Artikler

Hansen JS, Hansen RM, Petersen T, Gustavsen S, Oturai AB, Sellebjerg F o.a. The effect of cannabis-based medicine on neuropathic pain and spasticity in patients with multiple sclerosis and spinal cord injury: Study protocol of a national multi-center double-blinded, placebo-controlled trial. *Brain Sciences*. 2021 sep 14;11(9). 1212. <https://doi.org/10.3390/brainsci11091212>

Hvid LG, Gaemelke T, Dalgas U, Slipsager MK, Rasmussen PV, Petersen T o.a. Personalised inpatient multidisciplinary rehabilitation elicits clinically relevant improvements in physical function in patients with multiple sclerosis: The Danish MS Hospitals Rehabilitation Study. *Multiple Sclerosis Journal - Experimental, Translational and Clinical*. 2021 jan;7(1):1-12. <https://doi.org/10.1177/2055217321989384>

Riemenschneider M, Hvid LG, Ringgaard S, Nygaard MKE, Eskildsen SF, Petersen T o.a. Study protocol: randomised controlled trial evaluating exercise therapy as a supplemental treatment strategy in early multiple sclerosis: The Early Multiple Sclerosis Exercise Study (EMSES). *BMJ Open*. 2021 jan 12;11(1). e043699. <https://doi.org/10.1136/bmjopen-2020-043699>

Riemenschneider M, Hvid LG, Petersen T, Stenager E, Dalgas U. Efficacy of exercise therapy on physical function and cognition in early multiple sclerosis - The Early Multiple Sclerosis Exercise Study (EMSES). *Multiple Sclerosis Journal*. 2021 nov 1;27(3 Suppl.):25. 43.

Adil M, Jensen-Fangel S, Gammelgaard L, Petersen T. Longitudinally extensive transverse myelitis and Hepatitis C: a case report and literature review. *Clinical Case Reports*. 2021 aug 15;9(8). e04631. <https://doi.org/10.1002/ccr3.4631>

Langeskov-Christensen M, Hvid LG, Jensen HB, Nielsen HH, Petersen T, Stenager E o.a. Efficacy of high-intensity aerobic exercise on cognitive performance in people with multiple sclerosis: A randomized controlled trial. *Multiple Sclerosis Journal*. 2021 sep;27(10):1585-1596. <https://doi.org/10.1177/1352458520973619>

Mamoei S, Jensen HB, Kristian Pedersen A, Nygaard MKE, Eskildsen SF, Dalgas U o.a. Clinical, neurophysiological, and MRI markers of Fampri-dine responsiveness in Multiple Sclerosis: an explorative study. *Frontiers in Neurology*. 2021;12. <https://doi.org/10.3389/fneur.2021.758710>



Forskningsenheden er forankret i afdelingen for blodprøver, biokemi og immunologi. MOK arbejder med forståelse af sygdomsmekanismer, prædiktions af behandlingsrespons, registerstudier og kostens betydning for sygdommen. Enheden forsker primært i patienter med kronisk inflammatoriske sygdomme (kronisk tarmbetændelse, gigt, psoriasis) og patienter med tyktarmskræft. Vi har fokus på udvikling af personlig medicin gennem dybdegående molekylær karakterisering af den enkelte person for at kunne forbedre og individualisere diagnostik, behandling, tidspunkt for behandlingen, prævention og forudsigelse af sygdomsforløb. Enheden bestod i 2021 af forskningsleder og professor Vibeke Andersen, lektor Lene Kjeldsen, lektor Ming Chen, post docs Signe Bek Sørensen og Trine Andresen, ph.d.-stud. Silja Hvid Overgaard, Nathalie Fogh Rasmussen, Mohamad Jawhara, Bo Bødker Jensen, Karen Mai Møllegaard, Laura Gregersen, Anja Fejrskov Serverino og Zainab Hikmat.

Mohamad Jawhara forsvarede sin ph.d.-afhandling: The impact of red meat and whole-grain intake on the colonic mucosal barrier, and the evidence on the available biomarkers of whole-grain intake in humans i januar 2021. I april forsvarede Bo Bødker Jensen sin ph.d.-afhandling: The Occurrence of Rickettsiosis and the impact of Weather on Tick-borne Infections in Denmark

Artikler

Andersen V, Pedersen AK, Möller S, Green A. Chronic inflammatory diseases - diabetes mellitus, rheumatoid arthritis, coeliac disease, crohn's disease, and ulcerative colitis among the offspring of affected parents: A Danish population-based registry

study. *Clinical Epidemiology*. 2021 jan;13:13-20. <https://doi.org/10.2147/CLEP.S286623>

Duus KS, Moos C, Frederiksen P, Andersen V, Heitmann BL. Prenatal and early life exposure to the danish mandatory vitamin d fortification policy might prevent inflammatory bowel disease later in life: A societal experiment. *Nutrients*. 2021 apr 19;13(4). 1367. <https://doi.org/10.3390/nu13041367>

Famarzi E, Mohammadzadeh M, Sanaie S, Andersen V, Mahdavi R. Effects of conjugated linoleic acid supplementation on serum leptin levels, oxidative stress factors and tumor marker in rectal cancer patients undergoing preoperative chemoradiotherapy. *Mediterranean Journal of Nutrition and Metabolism*. 2021 sep 13;14(3):245-253. <https://doi.org/10.3233/mnm-200507>

Rasmussen NF, Bech BH, Rubin KH, Andersen V. Associations between participation in, intensity of, and time spent on leisure time physical activity and risk of inflammatory bowel disease among older adults (PA-IBD): a prospective cohort study. *BMC Public Health*. 2021 apr;21. 634. <https://doi.org/10.1186/s12889-021-10492-7>

Rye C, Rubin KH, Moller FT, Julsgaard M, Jess T, Andersen V. Positive predictive value of diagnostic codes for inflammatory bowel disease in the danish national patient registry among individuals 50+ years, using patient records as reference standard. *Clinical Epidemiology*. 2021 maj 24;13:335-344. <https://doi.org/10.2147/CLEP.S298770>

Schwarz CW, Loft N, Andersen V, Juul L, Zachariae C, Skov L. Are systemic corticosteroids causing psoriasis flare-ups? Questionnaire for Danish dermatologists, gastroen-

terologists and rheumatologists. *Dermatology*. 2021 jul;237(4):588-594. <https://doi.org/10.1159/000510712>

Badran S, Chen M, Coia JE. Multiplex Droplet Digital Polymerase Chain Reaction Assay for Rapid Molecular Detection of Pathogens in Patients With Sepsis: Protocol for an Assay Development Study. *JMIR Research Protocols*. 2021 dec 13;10(12). e33746. <https://doi.org/10.2196/33746>

Caixinha AL, Valsamidis AN, Chen M, Lindberg M. Pseudomonas otitidis bacteraemia in a patient with COPD and recurrent pneumonia: case report and literature review. *BMC Infectious Diseases*. 2021 aug 25;21. 868. <https://doi.org/10.1186/s12879-021-06569-8>

Desdorf R, Andersen NM, Chen M. Mycoplasma genitalium prevalence and macrolide resistance-associated mutations and coinfection with Chlamydia trachomatis in Southern Jutland, Denmark. *A P M I S. Acta Pathologica, Microbiologica et Immunologica Scandinavica (Online)*. 2021 dec;129(12):706-710. <https://doi.org/10.1111/apm.13174>

Jensen BB, Bruun MT, Jensen PM, Pedersen AK, Fournier PE, Skarpheindsson S o.a. Evaluation of factors influencing tick bites and tick-borne infections: a longitudinal study. *Parasites and Vectors*. 2021 maj 29;14. 289. <https://doi.org/10.1186/s13071-021-04751-0>

Kragsnaes MS, Kjeldsen J, Horn HC, Munk HL, Pedersen JK, Just SA o.a. Safety and efficacy of faecal microbiota transplantation for active peripheral psoriatic arthritis: an exploratory randomised placebo-controlled trial. *Annals of the rheumatic diseases*. 2021 sep;80(9):1158-1167. <https://doi.org/10.1136/annrheumdis-2020-219511>

Er forankret i Fælles Akutmodtagelsen. Akutforskningsenheden bedriver klinisk forskning, som har til hensigt at optimere det akutte patientforløb. Akutforskningsenheden arbejder med to hovedområder: 1) at være med til at reducere antibiotikaresistens gennem bedre diagnostik af akutte infektioner og mere målrettet antibiotikaanvendelse og 2) at optimere det tværsektorielle, akutte forløb for borgerne. Enheden består af forskningsleder og professor Christian Backer Mogensen, Lektor Helene Skjøt-Arkil, post doc Thorbjørn Mikkelsen, ph.d.-studerende Lilian Keene Boye, Gitte Schultz Kristensen, Morten Hjarnø Lorentzen, Mariana Cartuliales, Anne Heltborg Kastberg, Maiken Hjuler Persson, Mette Elkjær, Eva Hofmann, Lotte Abildgren, Malte Lebahn og Mathias Amdi Hertz.

Lilian Keene Boye forsvarede sin ph.d. afhandling: *Acute Hospitalized Older Multimorbid Patients' Perspectives on their Healthcare Process: Patients' Experiences and Continuity of Care* i juli 2021.

Artikler

Boye LK, Mogensen CB, Andersen PT, Waldorff FB, Mikkelsen TH. 'One feels somewhere that one is insignificant in that system' - older multimorbid patients' between lifeworld and system in healthcare. *BMC Geriatrics*. 2021 jun 29;21. 397. <https://doi.org/10.1186/s12877-021-02348-x>

Cartuliales MB, Skjøt-Arkil H, Rosenvinge FS, Mogensen CB, Skovsted TA, Pedersen AK. Effectiveness of expiratory technique and induced sputum in obtaining good quality sputum from patients acutely hospitalized with suspected lower respiratory

tract infection: a statistical analysis plan for a randomized controlled trial. *Trials*. 2021 okt 2;22. 675. <https://doi.org/10.1186/s13063-021-05639-1>

Elkjær M, Wolff DL, Primdahl J, Backer Mogensen C, Brabrand M, Gram B. Older adults who receive homecare are at increased risk of readmission and mortality following a short ED admission: a nationally register-based cohort study. *BMC Geriatrics*. 2021 dec 15;21. 696. <https://doi.org/10.1186/s12877-021-02644-6>

Hjuler Persson M, Backer Mogensen C, Søndergaard J, Skjøt-Arkil H, Andersen PT. Healthcare professionals' practice and interactions in older peoples' cross-sectoral clinical care trajectories when acutely hospitalized - A qualitative observation study. *BMC Health Services Research*. 2021 sep 9;21(1). 944. <https://doi.org/10.1186/s12913-021-06953-9>

Jensen HI, Ozden S, Kristensen GS, Azizi M, Smedemark SA, Mogensen CB. Limitation of life-sustaining treatment and patient involvement in decision-making: a retrospective study of a Danish COVID-19 patient cohort. *Scandinavian Journal of Trauma, Resuscitation and Emergency Medicine*. 2021 dec 20;29. 173. <https://doi.org/10.1186/s13049-021-00984-1>

Laursen JO, Backer Mogensen C, Skjøt-Arkil H. HemiCAP Knee Implants: Mid- to Long-Term Results. *Cartilage*. 2021 dec;13(1-suppl):1718S-1725S. <https://doi.org/10.1177/1947603519894732>

Skjøt-Arkil H, Heltborg A, Lorentzen MH, Cartuliales MB, Hertz MA, Graumann O o.a. Improved diagnostics of infectious diseases in emergency departments: a protocol of a mul-

tifaceted multicentre diagnostic study. *BMJ Open*. 2021 sep 30;11(9). e049606. <https://doi.org/10.1136/bmjopen-2021-049606>

von Huth S, Lillevang ST, Røge BT, Madsen JS, Mogensen CB, Coia JE o.a. SARS-CoV-2 seroprevalence among 7950 healthcare workers in the Region of Southern Denmark. *International Journal of Infectious Diseases*. 2021 nov;112:96-102. <https://doi.org/10.1016/j.ijid.2021.09.023>

Bogh SB, Fløjstrup M, Möller S, Bech M, Johnsen SP, Henriksen DP o.a. Intended and unintended changes in length of stay following reconfiguration of emergency care departments. *International journal for quality in health care : journal of the International Society for Quality in Health Care*. 2021 feb 5;33(1). mzab008. <https://doi.org/10.1093/intqhc/mzab008>

Christensen BB, El-Galaly A, Laursen JO, Lind M. Eighty Percent Survival of Resurfacing Implants in the Knee After 10 Years: A Nationwide Cohort Study on 379 Procedures from the Danish Knee Arthroplasty Registry. *Cartilage*. 2021 dec;13(-Suppl. 1):900S-906S. <https://doi.org/10.1177/19476035211030983>

Hejgaard Jensen N, Lo RSL, Hung KKC, Lorentzen M, Laugesen S, Posth S o.a. Thermographic visualization of facial vasoconstriction is associated with 30-day all-cause mortality in medical patients; Prospective observational two-site cohort study. *Acute Medicine*. 2021 jun 6;20(2):89-156. <https://doi.org/10.52964/AMJA.0849>



Er forankret i Medicinske Sygdomme. Enheden beskæftiger sig med et bredt spektrum af forskning inden for de medicinske, palliative og organisatoriske områder. Forskningsenheden arbejder tværfagligt og tværsektorielt og enhedens overordnede formål er at bidrage med ny viden til at sikre bedre behandling og pleje af medicinske og palliative patienter. Medicinsk forskningsenhed består af Forskningsleder og lektor Frans Brandt Kristiansen, Lektor Georg Bollig, ph.d. studerende Anders Nikolai Ørsted Schultz, Mariam Safi, Eithne Hayes Bauer, Jan Dominik Kampmann, datamanager Donna Lykke Wolf, Post doc Betina Thude og forskningssekretær Kathrin Söderberg.

Artikler

Bauer EH, Schultz ANØ, Brink A, Jørgensen LO, Bollig G. Patients' and Relatives' Preferences for a Palliative/Oncology Day Ward and Out-of-Hours Telemedicine: An Interpretive Description. *Healthcare*. 2021 jun 18;9(6). 758. <https://doi.org/10.3390/healthcare9060758>

Bollig G, Meyer S, Knopf B, Schmidt M, Bauer EH. First Experiences with Online Last Aid Courses for Public Palliative Care Education during the COVID-19 Pandemic. *Healthcare*. 2021 feb 5;9(2). 172. <https://doi.org/10.3390/healthcare9020172>

Bollig G, Brandt Kristensen F, Wolff DL. Citizens appreciate talking about death and learning end-of-life care: a mixed-methods study on views and experiences of 5469 Last Aid Course participants. *Progress in Palliative Care*. 2021;29(3):140-148. <https://doi.org/10.1080/09699260.2021.1887590>

[org/10.1080/09699260.2021.1887590](https://doi.org/10.1080/09699260.2021.1887590)

Bollig G, Bauer EH. Last Aid Courses as measure for public palliative care education for adults and children: a narrative review. *Annals of Palliative Medicine*. 2021 jul;10(7):8242-8253. <https://doi.org/10.21037/apm-21-762>

Kampmann JD, Heaf JG, Mogensen CB, Mickley H, Brandt F. Kidney disease cohort (KidDiCo) of southern Denmark: Design, coverage, generalizability and implications for use. *Clinical Epidemiology*. 2021;13:971-980. <https://doi.org/10.2147/CLEP.S328512>

Thvilum M, Brandt F, Lillevang-Johansen M, Folkestad L, Brix TH, Hegedüs L. Increased risk of dementia in hypothyroidism: A Danish nationwide register-based study. *Clinical endocrinology*. 2021 jun;94(6):1017-1024. <https://doi.org/10.1111/cen.14424>

Kampmann J, Granhøj J, Brandt Kristensen F, Pedersen A, Backer Mogensen C, Heaf JG o.a. Troponin cut-offs for acute myocardial infarction in patients with impaired renal function - a systematic review and meta-analysis. *Nephrology Dialysis Transplantation*. 2021 maj;36(Suppl. 1). Mo175. <https://doi.org/10.1093/ndt/gfab092.0053>

Justesen T, Freyberg J, Schultz ANØ. Database selection and data gathering methods in systematic reviews of qualitative research regarding diabetes mellitus: an explorative study. *BMC Medical Research Methodology*. 2021;21. 94. <https://doi.org/10.1186/s12874-021-01281-2>

Ralli M, Justesen T, Frevert SC, Ørsted Schultz AN. Traumatic iatrogenic chylothorax after external electrical cardioversion. *Respirology Case Reports*. 2021 jan;9(1). e00695. <https://doi.org/10.1002/rcr2.695>

Morsø L, Hansen MS, Brink A, Thams M, Thude BR. How to Ensure Referral and Uptake for COPD Rehabilitation - Part 2: A Case of Integrated Care on How to Translate Findings of Cross-Sectorial Workflow to Improve Cross-Sectorial Rehabilitation. *International Journal of Integrated Care*. 2021 mar 2;21(1). 10. <https://doi.org/10.5334/ijic.5503>

Thude BR, Brink A, Hansen MS, Morsø L. How to ensure referral and uptake for copd rehabilitation-part 1: Disentangling factors in the cross-sectorial workflow of patients with copd to understand why most patients are not referred to rehabilitation. *International Journal of Integrated Care*. 2021;21(1). <https://doi.org/10.5334/ijic.5502>

Thude BR, Primdahl J, Jensen HI, Elkjær M, Hoffmann E, Keene Gulddammer Boye L o.a. How did nurses cope with the fast, comprehensive organisational changes at Danish hospital wards during the COVID-19 pandemic? An interview study based on nurses' experiences. *BMJ Open*. 2021 dec 23;11(12). e049668. <https://doi.org/10.1136/bmjopen-2021-049668>

Eriksen AM, Marså K, Hygum A, Bollig G. Håndtering af COVID-19 i specialiseret palliation i Danmark: erfaringer og anbefalinger. *Omsorg*. 2021 mar 1;2021(1):16-20.



Heaf J, Heiro M, Petersons A, Vernere B, Povlsen JV, Sørensen AB o.a. Suboptimal dialysis initiation is associated with comorbidities and uraemia progression rate but not with estimated glomerular filtration rate. *Clinical Kidney Journal*. 2021 mar;14(3):933-942. <https://doi.org/10.1093/ckj/sfaa041>

Heaf J, Heiro M, Petersons A, Vernere B, Povlsen JV, Sørensen AB o.a. Choice of dialysis modality among patients initiating dialysis: results of the Peridialysis study. *Clinical Kidney*

Journal. 2021 sep 1;14(9):2064-2074. <https://doi.org/10.1093/ckj/sfaa260>

Mueller E, Bollig G, Becker G, Boehlke C. Lessons Learned from Introducing Last Aid Courses at a University Hospital in Germany. *Healthcare*. 2021 jul 16;9(7). 906. <https://doi.org/10.3390/healthcare9070906>

Zelko E, Bollig G. Report from the 2. International LAST AID Conference Online-The social impact of palliative care, October 30 2020, Maribor, Slovenia. *A I M S Medical*

Science. 2021;8(1):42-45. <https://doi.org/10.3934/medsci.2021005>



Er forankret i afdelingen for bedøvelse og intensiv. Forskningsenheden i Bedøvelse og Intensiv arbejder bredt med forskning, udvikling og undervisning inden for specialet. Afdelingen har en bred berøringsflade fra både det akutte medicinske område til det kirurgiske og til det interne medicinske, samt det præhospitale med 2 døgnbemandede lægebiler. Enheden består af Professor og forskningsleder Thomas Strøm, Overlæge Rajesh Prabhakar Bhavsar, præ-ph.d.-studerende Gunhild Kjærgaard-Andersen.

Artikler

Nedergaard HK, Jensen HI, Olsen HT, Strøm T, Lauridsen JT, Sjøgaard G o.a. Effect of non-sedation on physical function in survivors of critical illness - A substudy of the NONSEDA

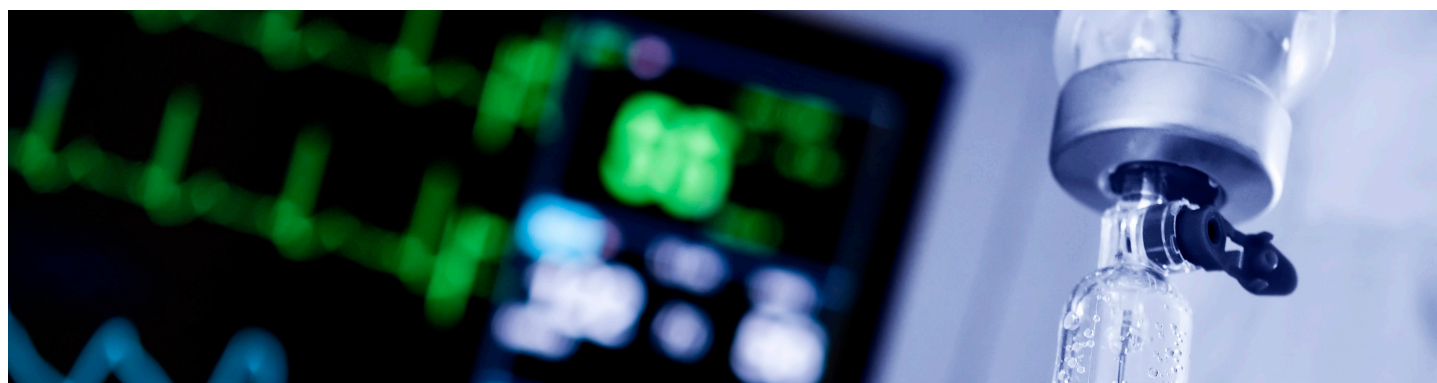
randomized trial. *Journal of Critical Care*. 2021 apr;62:58-64. <https://doi.org/10.1016/j.jcrc.2020.11.017>

Olsen HT, Nedergaard HK, Hough CL, Korkmaz S, Jensen HI, Strøm T o.a. Non-sedation—Does it improve health-related quality of life after critical illness? A 3-month follow-up sub-study of the NONSEDA trial. *Acta Anaesthesiologica Scandinavica*. 2021 apr;65(4):481-488. <https://doi.org/10.1111/aas.13775>

Granholt A, Munch MW, Myatra SN, Vijayaraghavan BKT, Cronhjort M, Wahlin RR o.a. Higher vs Lower Doses of Dexamethasone in Patients with COVID-19 and Severe Hypoxia (COVID STEROID 2) trial: Protocol for a secondary Bayesian analysis. *Acta Anaesthesiologica Scandinavica*. 2021 maj;65(5):702-710. <https://doi.org/10.1111/aas.13793>

Granholt A, Kaas-Hansen BS, Kjær MBN, Anthon CT, Sivapalan P, Schjørring OL o.a. Patient-important outcomes other than mortality in recent ICU trials: Protocol for a scoping review. *Acta Anaesthesiologica Scandinavica*. 2021 aug;65(7):1002-1007. <https://doi.org/10.1111/aas.13937>

Warrar Munch M, Granholt A, Nainan Myatra S, Kumar Tirupakuzhi Vijayaraghavan B, Cronhjort M, Rubenson Wahlin R o.a. Higher vs lower doses of dexamethasone in patients with COVID-19 and severe hypoxia (COVID STEROID 2) trial: Protocol and statistical analysis plan. *Acta Anaesthesiologica Scandinavica*. 2021 jul;65(6):834-845. <https://doi.org/10.1111/aas.13795>



Er forankret i Kvindesygdomme og fødsler. Forskningsenheden arbejder på at opkvalificere praksis med at udforske emner, hvor afdelingen har et flow der gør det muligt, en organisering, der fremmer og en interesse i at skabe ny viden. Enheden består af forskningsleder og lektor Finn Friis Lauszus og Post doc Mette Hulbæk Andersen.

Artikler

Dubietyte G, Kaiser K, Festersen Nielsen M, Lauszus FF. Consecutive measurements show association of IGF-1 with fetal growth in type 1 diabetic pregnancy. *Medical Research Archives*. 2021 jun 16;9(6). <https://doi.org/10.18103/mra.v9i6.2429>

Kaiser K, Nielsen MF, Kallfa E, Dubietyte G, Lauszus FF. Metabolic syndrome in women with previous gestational diabetes. *Scientific Reports*. 2021 jun 2;11. 11558. <https://doi.org/10.1038/s41598-021-90832-0>

Hulbaek M, Primdahl J, Birkelund R, Al-Kozai SAH, Barawi S, Ebbesen NT o.a. A Preference-Sensitive Online Instrument to Support Shared Decision Making for Patients With Pelvic Organ Prolapse-A Pilot Multicenter Randomized Controlled Trial. *Computers, Informatics, Nursing*. 2021 nov;39(11):714-724. <https://doi.org/10.1097/CIN.0000000000000789>

Lorentzen IP, Andersen CS, Jensen HS, Fogsgaard AS, Foureur M, Lauszus FF, Nohr EA. Does giving

birth in a "birth environment room" versus a standard birth room lower augmentation of labor? - Results from a randomized controlled trial. *Eur J Obstet Gynecol Reprod Biol*. 2021 Mar 13;10:100125. doi:10.1016/j.eurox.2021.100125

Rasmussen OB, Yding A, Andersen CS, Boris J, Lauszus FF. Which elements were significant in reducing obstetric anal sphincter injury? A prospective follow-up study. *BMC Pregnancy Childbirth*. 2021 Nov 18;21(1):781. doi: 10.1186/s12884-021-04260-z.



Er forankret i Kirurgisk afdeling. Enhedens formål er at skabe viden, der kommer de kirurgiske patienter til gode, således at vi kan tilbyde dem den bedst mulig behandling inden for det kirurgiske speciale. Enheden består af forskningsleder og lektor Michael Festersen Nielsen og ph.d.-studerende Pedja Cuk og Alexandros Valsimidis.

Artikler

Cuk P, Simonsen RM, Komljen M, Nielsen MF, Helligsø P, Pedersen AK o.a. Improved perioperative outcomes and reduced inflammatory stress response in malignant robot-assisted colorectal resections: a retrospective cohort study of 298 patients. *World Journal of Surgical Oncology*. 2021 maj 22;19. 155. <https://doi.org/10.1186/s12957-021-02263-w>

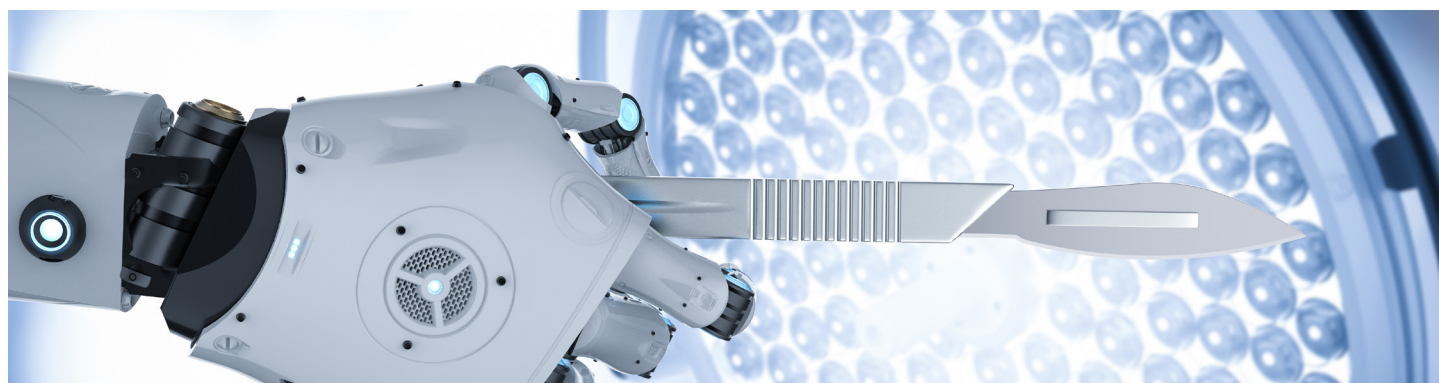
Cuk P, Pedersen AK, Lambertsen KL, Backer Mogensen C, Festersen Nielsen M, Helligsø P o.a. Systemic inflammatory response in robot-assisted and laparoscopic surgery for colon cancer (SIRIRALS): study protocol of a randomized controlled trial. *B M C Surgery*. 2021 okt 11;21. 363. <https://doi.org/10.1186/s12893-021-01355-4>

Nielsen AB, Kielsgaard Kristensen T, Arsic I, Festersen Nielsen M. Akut appendicitis efter koloskopi. *Ugeskrift for Laeger*. 2021;183(13). V08200600.

Nielsen KA, Frederichsen M, Valsamidis A, Harthimmer M, Helligso P, Nielsen M. SHORT AND LONG-TERM COMPLICATIONS FOLLOWING ROBOTIC-ASSISTED RETROMUSCULAR VENTRAL HERNIA REPAIR. *British Journal of Surgery*. 2021 nov 1;108(Suppl. 8). P097. <https://doi.org/10.1093/bjs/znab395.160>

Valsamidis A, Frederichsen M, Nielsen KA, Harthimmer M, Helligso P, Nielsen M. QUALITY OF LIFE FOLLOWING ROBOTIC-ASSISTED RETROMUSCULAR VENTRAL HERNIA REPAIR. *British Journal of Surgery*. 2021 nov 1;108(Suppl. 8). P096. <https://doi.org/10.1093/bjs/znab395.090>

Bogacki P, Gach T, Krzak J, Szura M. Panoramic colonoscopy in colorectal cancer screening: A randomized controlled trial. *Wideochirurgia I Inne Techniki Maloinwazyjne*. 2021 jun;16(2):289-296. <https://doi.org/10.5114/wiitm.2021.103922>



Er forankret i Ortopædkirurgisk afdeling. Enheden er tværfaglig og tværsektoriel. Forskningsområderne spænder over traditionel klinisk forskning, translationel forskning omkring stamcelle behandling samt kvalitativ forskning inden for det ortopædkirurgiske område. Enheden består af Professor og forskningsleder Lars Henrik Frich og lektor Kirsten Specht.

Artikler

Jensen PS, Specht K, Mainz H. Sleep quality among orthopaedic patients in Denmark: A nationwide cross-sectional study. *International Journal of Orthopaedic and Trauma Nursing*. 2021 feb;40. 100812. <https://doi.org/10.1016/j.ijotn.2020.100812>

Specht K, Primdahl J, Jensen HI, Elkjaer M, Hoffmann E, Boye LK o.a. Frontline nurses' experiences of working in a COVID-19 ward-A

qualitative study. *Nursing Open*. 2021 nov;8(6):3006-3015. <https://doi.org/10.1002/nop2.1013>

Jakobsen TT, Jester R, Specht K. Post-operative pain management in patients with primary knee replacement - A scoping review on nurse interventions. 2021. Poster session præsenteret ved Nordic conference in Nursing research, København, Danmark.

Forskningsenheden i Patologi

Er forankret i patologisk afdeling. Enheden arbejder med forskellige projekter inden for patologi. Enhedens styrker er kendskab til kvantitativ

patologi, implementeringsstrategi, menneskelige faktorer af betydning for implementering, immunhistokemi og kunstig intelligens. Enheden

består af professor og forskningsleder Niels Markussen.



Øre, næse hals kirurgisk

Donskov AO, Nielsen SH, Gyldenkerne N. Bihulecancer debuterede med symptomer fra tand i overkæben. *Ugeskrift for Laeger*. 2021;183(12). V05200392.

Onkologisk afdeling

Ehmsen S, Jakobsen LH, Lendorf ME, Eefsen RL, Bentsen L, Knoop AS o.a. Severity and 1-month outcome of SARS-CoV-2 infection in patients with solid cancers: a Danish nationwide cohort study. *Acta oncologica (Stockholm, Sweden)*. 2021 jul;60(7):859-865. <https://doi.org/10.1080/0284186X.2021.1889659>

Mouritzen MT, Carus A, Ladekarl M, Meldgaard P, Nielsen AWM, Livbjerg A o.a. Nationwide survival benefit after implementation of first-line immunotherapy for patients with advanced nsclc—real world efficacy. *Cancers*. 2021 okt 1;13(19). 4846. <https://doi.org/10.3390/cancers13194846>

Urinvejskirurgisk

Fode M, Wiborg MH, Fojecki G, Joensen UN, Jensen CFS. Organisk rejsningsbesvær. *Ugeskrift for Laeger*. 2021 jan;183(2). V09190546.

Jensen CFS, Joensen UN, Wiborg MH, Fojecki G, Fode M. Ejakulationsforstyrrelser. *Ugeskrift for Laeger*. 2021 jan;183(2). V09190544.

Joensen UN, Jensen CFS, Wiborg MH, Fojecki G, Fode M. Varicocele testis. *Ugeskrift for læger*. 2021;183(2). V10190550.

Fælles akutmodtagelse

Jensen CC, Skov H, Laursen JO. Kalkudfældninger med store følger i diabetisk fod. *Ugeskrift for Laeger*. 2021 mar 29;183(17). V08200601.

Viberg B, Gundtoft PH, Schønne-mann JO, Pedersen L, Andersen LR, Titlestad K o.a. Is tranexamic acid use in patients with a hip fracture

safe? a consecutive cohort study based on complete follow-up in a national database. *The Bone & Joint Journal*. 2021 mar 1;103-B(3):449-455. <https://doi.org/10.1302/0301-620X.103B3.BJJ-2020-1375.R2>

Biokemi, Blodprøver og immulogi

Giaccherini M, Macaуда A, Orciuolo E, Rymko M, Gruenpeter K, Dumontet C o.a. Genetically determined telomere length and multiple myeloma risk and outcome. *Blood Cancer Journal*. 2021 apr;11(4). 74. <https://doi.org/10.1038/s41408-021-00462-y>

Larsen CB, Petersen ERB, Overgaard M, Bonnema SJ. Macro-TSH: A Diagnostic Challenge. *European Thyroid Journal*. 2021 mar;10(1):93-97. <https://doi.org/10.1159/000509184>

Melaiu O, Macaуда A, Sainz J, Calvetti D, Facioni MS, Maccari G o.a. Common gene variants within 3'-untranslated regions as modulators of multiple myeloma risk and survival. *International Journal of Cancer*. 2021 apr 15;148(8):1887-1894. <https://doi.org/10.1002/ijc.33377>

Sánchez-Maldonado JM, Cáliz R, López-Nevot MÁ, Cabrera-Serrano AJ, Moñiz-Díez A, Canhão H o.a. Validation of GWAS-Identified Variants for Anti-TNF Drug Response in Rheumatoid Arthritis: A Meta-Analysis of Two Large Cohorts. *Frontiers in Immunology*. 2021 okt 27;12. 672255. <https://doi.org/10.3389/fimmu.2021.672255>

Hjerteafdelingen

Laugesen E, Knudsen ST, Hansen KW, Rossen NB, Jensen LO, Hansen MS o.a. Invasive aortic pulse pressure is not superior to cuff pulse pressure in cardiovascular risk prediction. *Journal of Hypertension*. 2021 apr;39(4):607-613. <https://doi.org/10.1097/HJH.0000000000002694>

Medicinske sygdomme

Levy-Schousboe K, Frimodt-Møller M, Hansen D, Peters CD, Kjærgaard KD, Jensen JD o.a. Vitamin K supplementation and arterial calcification in dialysis: results of the double-blind, randomized, placebo-controlled Renakvit trial. *Clinical Kidney Journal*. 2021 sep;14(9):2114-2123. <https://doi.org/10.1093/ckj/sfab017>

Ortopædkirurgisk

Liljensøe A, Laursen JO, Bliddal H, Søballe K, Mechlenburg I. Weight Loss Intervention Before Total Knee Replacement: A 12-Month Randomized Controlled Trial. *Scandinavian Journal of Surgery*. 2021 mar;110(1):3-12. <https://doi.org/10.1177/1457496919883812>

Radiologi

Outzen CB, Maron D, Nissen J, Munk J, Grau LM, Juhl D o.a. The influence of a novel edge enhancement software on image quality of DR hand images of patients with rheumatoid arthritis. *Radiography*. 2021 aug;27(3):877-882. <https://doi.org/10.1016/j.radi.2021.02.006>

Hæmatologisk

Redder L, Klausen TW, Vangsted AJ, Gregersen H, Andersen NF, Pedersen RS o.a. Validation of the UK myeloma research alliance risk profile, a new clinical prediction model for outcome in patients with newly diagnosed multiple myeloma not eligible for autologous stem cell transplantation: a population-based study from the Danish national multiple myeloma registry. *British Journal of Haematology*. 2021 apr;193(1):119-124. <https://doi.org/10.1111/bjh.16806>

Mikrobiologi

Risum M, Astvad K, Johansen HK, Schonheyder HC, Rosenvinge F, Knudsen JD o.a. Update 2016-2018 of the Nationwide Danish Fungaemia Surveillance Study: Epidemiologic

Changes in a 15-Year Perspective.
Journal of Fungi. 2021 jun 19;7(6).
491. [https://doi.org/10.3390/
jof7060491](https://doi.org/10.3390/jof7060491)

Szarvas J, Rebelo AR, Bortolaia V,
Leekitcharoenphon P, Hansen DS,
Nielsen HL o.a. Danish Whole-Ge-
nome-Sequenced *Candida albicans*
and *Candida glabrata* Samples Fit
into Globally Prevalent Clades. Jour-
nal of Fungi. 2021 nov 12;7(11). 962.
<https://doi.org/10.3390/jof7110962>

Forskerservice

Küttel A, Kristian Pedersen A, Larsen
CH. To Flourish or Languish, that is
the Question: Exploring the Mental
Health Profiles of Danish Elite Ath-
letes. Psychology of Sport and Exer-
cise. 2021 jan;52. 101837. [https://doi.
org/10.1016/j.psychsport.2020.101837](https://doi.org/10.1016/j.psychsport.2020.101837)

Primdahl J, Esbensen BA, Pedersen
AK, Bech B, de Thurah A. Validation
of the Danish versions of the Bris-
tol Rheumatoid Arthritis Fatigue
Multi-Dimensional Questionnaires
(BRAFs). Scandinavian Journal of
Rheumatology. 2021 sep;50(5):351-
359. [https://doi.org/10.1080/030097
42.2020.1869301](https://doi.org/10.1080/03009742.2020.1869301)

Sygehus Sønderjylland
Kresten Philipsens Vej 15 . 6200 Aabenraa
Tlf. 74 63 15 15
www.sygehussonderjylland.dk

www.regionsyddanmark.dk